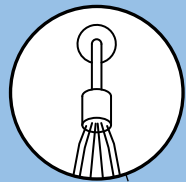


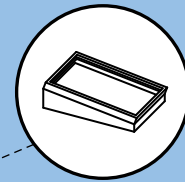
unit tree planting to provide maximum climatic benefits (i.e. summer shade, winter sunlight)



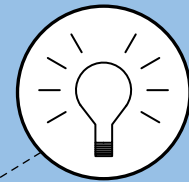
ENERGY STAR low-E windows



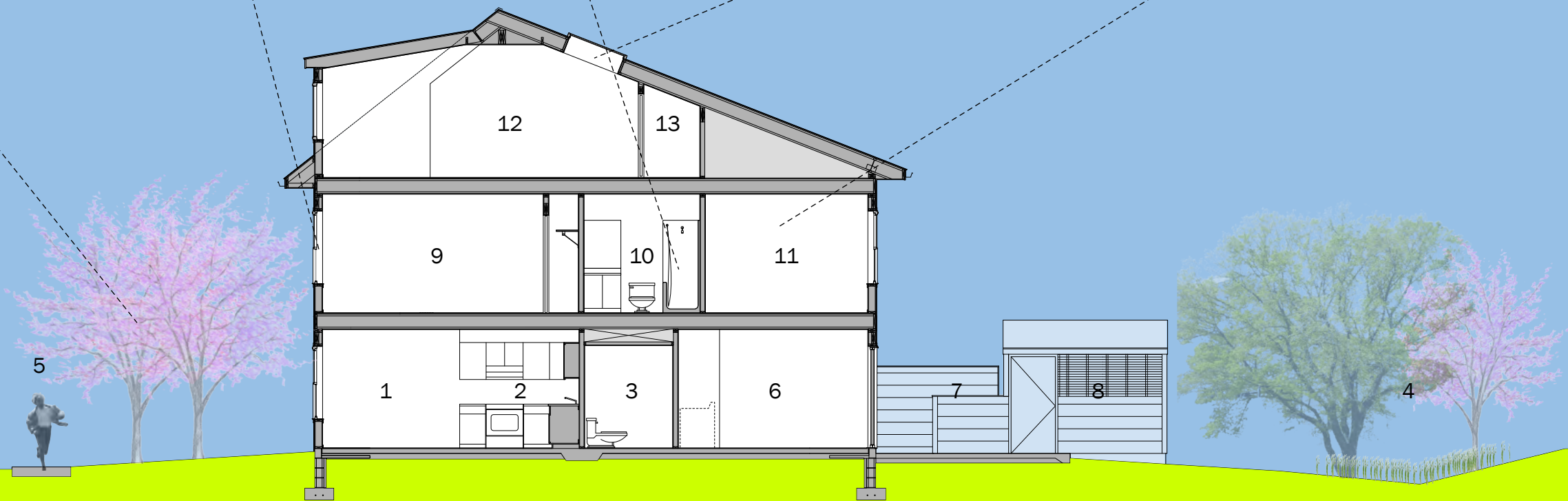
low-flow plumbing fixtures, including toilets, faucet aerators and showerheads



natural daylighting

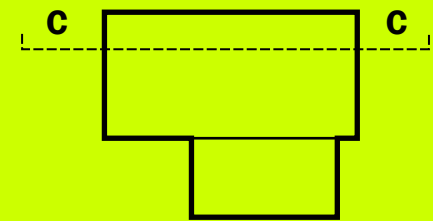


energy efficient fluorescent lighting



- 1 DINING
- 2 KITCHEN
- 3 1/2 BATHROOM
- 4 VEGETATED BIO-SWALE
- 5 COMMUNITY SIDEWALK
- 6 LIVING ROOM
- 7 CONCRETE PATIO
- 8 EXTERIOR STORAGE SHED
- 9 BEDROOM
- 10 BATHROOM

- 11 MASTER BEDROOM
- 12 WALK-UP STORAGE (OR OPTIONAL BEDROOM)
- 13 STORAGE CLOSET



CROSS SECTION "C"
UNIT TYPES A, B and C